

4,5,6,7-Tetrachloro-*N*-(2,3,4-trifluorophenyl)phthalimide

Yin-Jun Zhang, Chen-Tao Luo, Yu-Guang Wang and Zhao Wang*

College of Biological and Environmental Engineering, Zhejiang University of Technology, Hangzhou 310032, People's Republic of China
Correspondence e-mail: ljy20080528@yahoo.com.cn

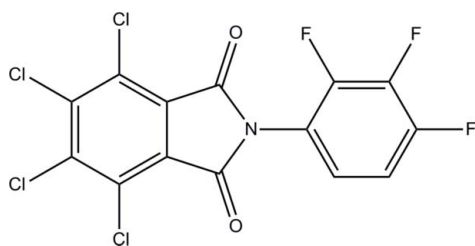
Received 27 May 2011; accepted 30 May 2011

Key indicators: single-crystal X-ray study; $T = 113$ K; mean $\sigma(\text{C}-\text{C}) = 0.003$ Å; R factor = 0.038; wR factor = 0.095; data-to-parameter ratio = 15.4.

The asymmetric unit of the title compound, $\text{C}_{14}\text{H}_2\text{Cl}_4\text{F}_3\text{NO}_2$, contains two independent molecules. In each molecule, the phthalimide ring system is nearly planar [maximum atomic deviation = 0.031 (2) or 0.038 (2) Å] and oriented with respect to the benzene ring at 65.04 (7) or 71.76 (10)°. Weak intermolecular $\text{C}-\text{H}\cdots\text{O}$ and $\text{C}-\text{H}\cdots\text{F}$ hydrogen bonding is present in the crystal structure.

Related literature

For the title compound as an intermediate of organic electro-luminescent materials, see: Han & Kay (2005). For the synthesis, see: Valkonen *et al.* (2007); Barchin *et al.* (2002). For related structures, see: Xu *et al.* (2006); Fu *et al.* (2010*a,b,c*).



Experimental

Crystal data

$\text{C}_{14}\text{H}_2\text{Cl}_4\text{F}_3\text{NO}_2$
 $M_r = 414.97$
Triclinic, $P\bar{1}$
 $a = 6.7722$ (7) Å
 $b = 8.8052$ (12) Å
 $c = 24.493$ (3) Å
 $\alpha = 95.777$ (9)°
 $\beta = 94.514$ (17)°
 $\gamma = 98.839$ (12)°
 $V = 1429.2$ (3) Å³
 $Z = 4$
Mo $K\alpha$ radiation
 $\mu = 0.87$ mm⁻¹
 $T = 113$ K
 $0.20 \times 0.18 \times 0.12$ mm

Data collection

Rigaku Saturn 724CCD area-detector diffractometer
Absorption correction: multi-scan (*SADABS*; Bruker, 2001)
 $T_{\min} = 0.845$, $T_{\max} = 0.903$
13490 measured reflections
6684 independent reflections
4832 reflections with $I > 2\sigma(I)$
 $R_{\text{int}} = 0.033$

Refinement

$R[F^2 > 2\sigma(F^2)] = 0.038$
 $wR(F^2) = 0.095$
 $S = 0.98$
6684 reflections
433 parameters
H-atom parameters constrained
 $\Delta\rho_{\max} = 0.62$ e Å⁻³
 $\Delta\rho_{\min} = -0.38$ e Å⁻³

Table 1

Hydrogen-bond geometry (Å, °).

$D-H\cdots A$	$D-H$	$H\cdots A$	$D\cdots A$	$D-H\cdots A$
$\text{C14}-\text{H14}\cdots\text{O3}^{\text{i}}$	0.95	2.44	3.210 (3)	138
$\text{C27}-\text{H27}\cdots\text{F3}^{\text{ii}}$	0.95	2.45	3.379 (3)	165
$\text{C28}-\text{H28}\cdots\text{O1}$	0.95	2.50	3.403 (3)	158

Symmetry codes: (i) $x, y - 1, z$; (ii) $-x + 1, -y + 1, -z + 1$.

Data collection: *SMART* (Bruker, 2007); cell refinement: *SAINT* (Bruker, 2007); data reduction: *SAINT*; program(s) used to solve structure: *SHELXTL* (Sheldrick, 2008); program(s) used to refine structure: *SHELXTL*; molecular graphics: *SHELXTL*; software used to prepare material for publication: *SHELXTL*.

Supplementary data and figures for this paper are available from the IUCr electronic archives (Reference: XU5228).

References

- Barchin, B. M., Cuadro, A. M. & Alvarez-Builla, J. (2002). *Synlett*, **2**, 343–345.
Bruker (2001). *SADABS*. Bruker AXS Inc., Madison, Wisconsin, USA.
Bruker (2007). *SMART* and *SAINT*. Bruker AXS Inc., Madison, Wisconsin, USA.
Fu, X.-S., Yu, X.-P., Wang, W.-M. & Lin, F. (2010*a*). *Acta Cryst.* **E66**, o1809.
Fu, X.-S., Yu, X.-P., Wang, W.-M. & Lin, F. (2010*b*). *Acta Cryst.* **E66**, o1744.
Fu, X.-S., Yu, X.-P., Wang, W.-M. & Lin, F. (2010*c*). *Acta Cryst.* **E66**, o1859.
Han, K. J. & Kay, K. Y. (2005). *J. Korean Chem. Soc.* **49**, 233–238.
Sheldrick, G. M. (2008). *Acta Cryst.* **A64**, 112–122.
Valkonen, A., Lahtinen, T. & Rissanen, K. (2007). *Acta Cryst.* **E63**, o472–o473.
Xu, D., Shi, Y.-Q., Chen, B., Cheng, Y.-H. & Gao, X. (2006). *Acta Cryst.* **E62**, o408–o409.

supplementary materials

Acta Cryst. (2011). E67, o1604 [doi:10.1107/S1600536811020721]

4,5,6,7-Tetrachloro-*N*-(2,3,4-trifluorophenyl)phthalimide

Y.-J. Zhang, C.-T. Luo, Y.-G. Wang and Z. Wang

Comment

The title compound is a key intermediate of organic electro-luminescent, the emission of light by organic molecules exposed in the electric field, which has been wide investigated in academic and industrial displays (Han & Kay, 2005).

The molecular structure of the title compound is illustrated in Fig. 1. In the title compound, two rings are nearly planar, but the molecule as a whole is not planar. The dihedral angle between the benzene ring and the phthalimide plane is 66.03 (12)°, which is greater than 60.3 (5)° found in a related compound 2-(2-iodoethyl)isoindole-1,3-dione (Valkonen *et al.* 2007). Intermolecular weak C—H···O and C—H···F hydrogen bonding is present in the crystal structure (Table 1).

Experimental

Compound (I) was prepared according to the procedure in the literature (Barchin *et al.*, 2002). The reaction was initiated by the addition of one molar equivalent of 2,3,4-trifluoroaniline and one molar equivalents of 4,5,6,7-tetrachlorophthalic anhydride and subsequent refluxing overnight, and then filtered. The crude produce was washed with water three times, and dried. The compound resulted (yield 96%) and single crystals suitable for X-ray analysis were obtained by slow evaporation of a ethyl acetate solution.

Refinement

H atoms were positioned geometrically and refined as riding with C—H = 0.95 Å, and $U_{\text{iso}}(\text{H}) = 1.2U_{\text{eq}}(\text{C})$.

Figures

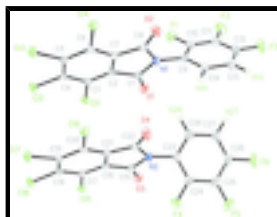


Fig. 1. View of the molecule of showing the atom-labelling scheme. Displacement ellipsoids are drawn at the 30% probability level.

4,5,6,7-Tetrachloro-2-(2,3,4-trifluorophenyl)isoindoline-1,3-dione

Crystal data

$\text{C}_{14}\text{H}_2\text{Cl}_4\text{F}_3\text{NO}_2$

$M_r = 414.97$

Triclinic, $P\bar{1}$

$Z = 4$

$F(000) = 816$

$D_x = 1.928 \text{ Mg m}^{-3}$

supplementary materials

Hall symbol: -P 1
 $a = 6.7722$ (7) Å
 $b = 8.8052$ (12) Å
 $c = 24.493$ (3) Å
 $\alpha = 95.777$ (9)°
 $\beta = 94.514$ (17)°
 $\gamma = 98.839$ (12)°
 $V = 1429.2$ (3) Å³

Mo $K\alpha$ radiation, $\lambda = 0.71073$ Å
Cell parameters from 4943 reflections
 $\theta = 1.7$ – 27.9 °
 $\mu = 0.87$ mm⁻¹
 $T = 113$ K
Prism, colorless
 $0.20 \times 0.18 \times 0.12$ mm

Data collection

Rigaku Saturn 724CCD area-detector diffractometer
Radiation source: rotating anode multilayer
Detector resolution: 14.22 pixels mm⁻¹
 ω and ϕ scans
Absorption correction: multi-scan (SADABS; Bruker, 2001)
 $T_{\min} = 0.845$, $T_{\max} = 0.903$
13490 measured reflections

6684 independent reflections
4832 reflections with $I > 2\sigma(I)$
 $R_{\text{int}} = 0.033$
 $\theta_{\max} = 27.9$ °, $\theta_{\min} = 1.7$ °
 $h = -8 \rightarrow 8$
 $k = -11 \rightarrow 11$
 $l = -31 \rightarrow 32$

Refinement

Refinement on F^2
Least-squares matrix: full
 $R[F^2 > 2\sigma(F^2)] = 0.038$
 $wR(F^2) = 0.095$
 $S = 0.98$
6684 reflections
433 parameters
0 restraints

Primary atom site location: structure-invariant direct methods
Secondary atom site location: difference Fourier map
Hydrogen site location: inferred from neighbouring sites
H-atom parameters constrained
 $w = 1/[\sigma^2(F_o^2) + (0.0384P)^2]$
where $P = (F_o^2 + 2F_c^2)/3$
 $(\Delta/\sigma)_{\max} = 0.001$
 $\Delta\rho_{\max} = 0.62$ e Å⁻³
 $\Delta\rho_{\min} = -0.38$ e Å⁻³

Special details

Geometry. All e.s.d.'s (except the e.s.d. in the dihedral angle between two l.s. planes) are estimated using the full covariance matrix. The cell e.s.d.'s are taken into account individually in the estimation of e.s.d.'s in distances, angles and torsion angles; correlations between e.s.d.'s in cell parameters are only used when they are defined by crystal symmetry. An approximate (isotropic) treatment of cell e.s.d.'s is used for estimating e.s.d.'s involving l.s. planes.

Refinement. Refinement of F^2 against ALL reflections. The weighted R -factor wR and goodness of fit S are based on F^2 , conventional R -factors R are based on F , with F set to zero for negative F^2 . The threshold expression of $F^2 > \sigma(F^2)$ is used only for calculating R -factors(gt) *etc.* and is not relevant to the choice of reflections for refinement. R -factors based on F^2 are statistically about twice as large as those based on F , and R -factors based on ALL data will be even larger.

Fractional atomic coordinates and isotropic or equivalent isotropic displacement parameters (\AA^2)

	<i>x</i>	<i>y</i>	<i>z</i>	$U_{\text{iso}}^*/U_{\text{eq}}$
C11	0.32227 (8)	0.91214 (6)	0.18882 (2)	0.01916 (13)
C12	0.25294 (9)	0.79727 (7)	0.06239 (2)	0.02243 (14)
C13	0.24340 (8)	0.44993 (7)	0.02105 (2)	0.02233 (13)
C14	0.28079 (8)	0.20952 (6)	0.10536 (2)	0.01886 (13)
C15	0.83636 (8)	1.38342 (6)	0.20872 (2)	0.01938 (13)
C16	0.77697 (8)	1.27830 (6)	0.08171 (2)	0.02106 (13)
C17	0.75697 (8)	0.93290 (7)	0.03745 (2)	0.02244 (14)
C18	0.78622 (8)	0.68379 (6)	0.11969 (2)	0.01849 (13)
F1	0.09797 (18)	0.52932 (15)	0.35163 (5)	0.0272 (3)
F2	0.1377 (2)	0.44755 (17)	0.45515 (5)	0.0370 (4)
F3	0.4616 (2)	0.32808 (17)	0.48974 (5)	0.0351 (4)
F4	1.29401 (19)	1.04373 (16)	0.33909 (5)	0.0290 (3)
F5	1.4227 (2)	0.98029 (18)	0.44020 (6)	0.0427 (4)
F6	1.1612 (2)	0.82690 (18)	0.50178 (5)	0.0442 (4)
O1	0.3982 (2)	0.74947 (18)	0.29461 (6)	0.0233 (4)
O2	0.3402 (2)	0.23349 (17)	0.23416 (6)	0.0229 (4)
O3	0.9291 (2)	1.21384 (18)	0.31271 (6)	0.0216 (4)
O4	0.8648 (2)	0.70099 (18)	0.24803 (6)	0.0257 (4)
N1	0.3776 (3)	0.4840 (2)	0.27781 (7)	0.0171 (4)
N2	0.9077 (3)	0.9487 (2)	0.29353 (7)	0.0177 (4)
C1	0.3739 (3)	0.6333 (3)	0.26336 (9)	0.0176 (5)
C2	0.3363 (3)	0.6123 (2)	0.20166 (8)	0.0151 (5)
C3	0.3126 (3)	0.7200 (2)	0.16569 (9)	0.0163 (5)
C4	0.2817 (3)	0.6680 (3)	0.10912 (8)	0.0168 (5)
C5	0.2751 (3)	0.5115 (3)	0.09030 (8)	0.0166 (5)
C6	0.2956 (3)	0.4031 (2)	0.12762 (8)	0.0164 (5)
C7	0.3259 (3)	0.4568 (3)	0.18312 (8)	0.0160 (5)
C8	0.3474 (3)	0.3692 (3)	0.23222 (8)	0.0169 (5)
C9	0.4061 (3)	0.4492 (2)	0.33327 (8)	0.0180 (5)
C10	0.2611 (3)	0.4700 (3)	0.36825 (9)	0.0208 (5)
C11	0.2802 (3)	0.4284 (3)	0.42102 (9)	0.0241 (5)
C12	0.4469 (4)	0.3681 (3)	0.43799 (9)	0.0254 (6)
C13	0.5958 (4)	0.3496 (3)	0.40436 (9)	0.0251 (6)
H13	0.7109	0.3090	0.4171	0.030*
C14	0.5749 (3)	0.3914 (3)	0.35132 (9)	0.0211 (5)
H14	0.6769	0.3802	0.3274	0.025*
C15	0.8977 (3)	1.0995 (3)	0.28042 (8)	0.0165 (5)
C16	0.8468 (3)	1.0809 (2)	0.21917 (8)	0.0155 (5)
C17	0.8229 (3)	1.1919 (2)	0.18423 (8)	0.0167 (5)
C18	0.7927 (3)	1.1435 (3)	0.12721 (8)	0.0171 (5)
C19	0.7833 (3)	0.9880 (3)	0.10714 (8)	0.0170 (5)
C20	0.8001 (3)	0.8765 (2)	0.14369 (8)	0.0155 (5)
C21	0.8327 (3)	0.9259 (2)	0.19943 (8)	0.0155 (5)
C22	0.8675 (3)	0.8368 (3)	0.24746 (8)	0.0169 (5)
C23	0.9670 (3)	0.9153 (2)	0.34779 (8)	0.0189 (5)

supplementary materials

C24	1.1641 (3)	0.9649 (3)	0.36851 (9)	0.0209 (5)
C25	1.2298 (4)	0.9340 (3)	0.42078 (9)	0.0257 (6)
C26	1.0962 (4)	0.8546 (3)	0.45089 (9)	0.0294 (6)
C27	0.8992 (4)	0.8043 (3)	0.43104 (9)	0.0316 (6)
H27	0.8088	0.7490	0.4526	0.038*
C28	0.8346 (4)	0.8359 (3)	0.37858 (9)	0.0254 (5)
H28	0.6988	0.8026	0.3641	0.031*

Atomic displacement parameters (\AA^2)

	U^{11}	U^{22}	U^{33}	U^{12}	U^{13}	U^{23}
Cl1	0.0216 (3)	0.0129 (3)	0.0235 (3)	0.0040 (2)	0.0019 (2)	0.0027 (2)
Cl2	0.0282 (3)	0.0206 (3)	0.0198 (3)	0.0039 (3)	0.0020 (2)	0.0088 (2)
Cl3	0.0299 (3)	0.0228 (3)	0.0139 (2)	0.0036 (3)	0.0013 (2)	0.0017 (2)
Cl4	0.0233 (3)	0.0144 (3)	0.0185 (3)	0.0032 (2)	0.0022 (2)	-0.0004 (2)
Cl5	0.0240 (3)	0.0126 (3)	0.0220 (3)	0.0042 (2)	0.0030 (2)	0.0020 (2)
Cl6	0.0251 (3)	0.0195 (3)	0.0201 (3)	0.0044 (2)	0.0025 (2)	0.0083 (2)
Cl7	0.0308 (3)	0.0228 (3)	0.0136 (3)	0.0044 (3)	0.0018 (2)	0.0017 (2)
Cl8	0.0228 (3)	0.0142 (3)	0.0179 (3)	0.0029 (2)	0.0021 (2)	-0.0008 (2)
F1	0.0239 (7)	0.0282 (8)	0.0303 (7)	0.0102 (6)	0.0008 (6)	0.0002 (6)
F2	0.0414 (9)	0.0446 (10)	0.0289 (8)	0.0109 (8)	0.0184 (7)	0.0044 (7)
F3	0.0549 (10)	0.0372 (10)	0.0147 (7)	0.0081 (8)	0.0041 (7)	0.0084 (6)
F4	0.0300 (8)	0.0265 (8)	0.0295 (8)	-0.0009 (6)	0.0030 (6)	0.0068 (6)
F5	0.0369 (9)	0.0459 (11)	0.0404 (9)	-0.0005 (8)	-0.0177 (7)	0.0088 (8)
F6	0.0619 (11)	0.0490 (11)	0.0223 (8)	0.0097 (9)	-0.0087 (7)	0.0154 (7)
O1	0.0322 (10)	0.0181 (9)	0.0186 (8)	0.0070 (8)	-0.0033 (7)	-0.0026 (7)
O2	0.0354 (10)	0.0141 (9)	0.0192 (8)	0.0041 (7)	0.0022 (7)	0.0026 (6)
O3	0.0298 (9)	0.0161 (9)	0.0179 (8)	0.0053 (7)	0.0002 (7)	-0.0031 (6)
O4	0.0417 (11)	0.0150 (9)	0.0202 (8)	0.0056 (8)	0.0000 (8)	0.0019 (7)
N1	0.0248 (10)	0.0137 (10)	0.0130 (9)	0.0047 (8)	0.0000 (8)	0.0013 (7)
N2	0.0267 (11)	0.0128 (10)	0.0137 (9)	0.0038 (8)	0.0002 (8)	0.0019 (7)
C1	0.0191 (12)	0.0163 (12)	0.0173 (11)	0.0046 (10)	-0.0019 (9)	0.0014 (9)
C2	0.0131 (11)	0.0154 (12)	0.0162 (10)	0.0013 (9)	0.0005 (9)	0.0019 (8)
C3	0.0146 (11)	0.0124 (11)	0.0215 (11)	0.0018 (9)	0.0020 (9)	0.0009 (9)
C4	0.0155 (11)	0.0168 (12)	0.0183 (11)	0.0015 (9)	0.0009 (9)	0.0062 (9)
C5	0.0160 (11)	0.0182 (12)	0.0153 (10)	0.0006 (9)	0.0029 (9)	0.0022 (9)
C6	0.0148 (11)	0.0150 (12)	0.0190 (11)	0.0017 (9)	0.0021 (9)	0.0011 (9)
C7	0.0152 (11)	0.0147 (11)	0.0184 (11)	0.0035 (9)	0.0015 (9)	0.0019 (9)
C8	0.0188 (12)	0.0164 (12)	0.0158 (11)	0.0053 (10)	0.0017 (9)	0.0003 (9)
C9	0.0272 (13)	0.0139 (11)	0.0122 (10)	0.0025 (10)	-0.0002 (9)	0.0008 (8)
C10	0.0229 (13)	0.0174 (12)	0.0215 (11)	0.0047 (10)	-0.0008 (10)	-0.0017 (9)
C11	0.0295 (14)	0.0235 (14)	0.0187 (11)	0.0014 (11)	0.0096 (10)	-0.0013 (10)
C12	0.0417 (16)	0.0206 (13)	0.0130 (11)	0.0006 (11)	0.0019 (11)	0.0039 (9)
C13	0.0313 (14)	0.0260 (14)	0.0192 (12)	0.0095 (11)	-0.0024 (10)	0.0043 (10)
C14	0.0255 (13)	0.0202 (13)	0.0188 (11)	0.0057 (10)	0.0048 (10)	0.0022 (9)
C15	0.0168 (11)	0.0150 (12)	0.0182 (11)	0.0039 (9)	0.0013 (9)	0.0024 (9)
C16	0.0144 (11)	0.0167 (12)	0.0149 (10)	0.0025 (9)	0.0007 (9)	0.0005 (9)
C17	0.0165 (12)	0.0133 (11)	0.0202 (11)	0.0020 (9)	0.0026 (9)	0.0019 (9)

C18	0.0154 (11)	0.0173 (12)	0.0192 (11)	0.0029 (9)	0.0015 (9)	0.0050 (9)
C19	0.0165 (11)	0.0203 (12)	0.0140 (10)	0.0015 (9)	0.0019 (9)	0.0027 (9)
C20	0.0123 (11)	0.0151 (12)	0.0184 (11)	0.0013 (9)	0.0009 (9)	0.0004 (9)
C21	0.0178 (12)	0.0134 (11)	0.0158 (10)	0.0040 (9)	0.0018 (9)	0.0014 (8)
C22	0.0192 (12)	0.0150 (12)	0.0162 (10)	0.0031 (9)	0.0014 (9)	0.0004 (9)
C23	0.0279 (13)	0.0156 (12)	0.0137 (10)	0.0064 (10)	-0.0008 (10)	0.0015 (9)
C24	0.0251 (13)	0.0168 (12)	0.0210 (11)	0.0028 (10)	0.0032 (10)	0.0034 (9)
C25	0.0273 (14)	0.0239 (14)	0.0238 (12)	0.0047 (11)	-0.0077 (11)	0.0006 (10)
C26	0.0438 (17)	0.0286 (15)	0.0164 (11)	0.0093 (13)	-0.0042 (11)	0.0055 (10)
C27	0.0409 (16)	0.0349 (16)	0.0209 (12)	0.0054 (13)	0.0058 (12)	0.0112 (11)
C28	0.0300 (14)	0.0258 (14)	0.0197 (12)	0.0021 (11)	0.0016 (10)	0.0030 (10)

Geometric parameters (Å, °)

C11—C3	1.719 (2)	C4—C5	1.401 (3)
C12—C4	1.714 (2)	C5—C6	1.401 (3)
C13—C5	1.714 (2)	C6—C7	1.382 (3)
C14—C6	1.722 (2)	C7—C8	1.503 (3)
C15—C17	1.718 (2)	C9—C10	1.375 (3)
C16—C18	1.717 (2)	C9—C14	1.381 (3)
C17—C19	1.715 (2)	C10—C11	1.380 (3)
C18—C20	1.725 (2)	C11—C12	1.373 (3)
F1—C10	1.344 (2)	C12—C13	1.370 (3)
F2—C11	1.344 (2)	C13—C14	1.388 (3)
F3—C12	1.350 (2)	C13—H13	0.9500
F4—C24	1.337 (2)	C14—H14	0.9500
F5—C25	1.341 (3)	C15—C16	1.499 (3)
F6—C26	1.347 (2)	C16—C17	1.382 (3)
O1—C1	1.196 (2)	C16—C21	1.387 (3)
O2—C8	1.194 (2)	C17—C18	1.408 (3)
O3—C15	1.197 (2)	C18—C19	1.398 (3)
O4—C22	1.195 (2)	C19—C20	1.404 (3)
N1—C1	1.399 (3)	C20—C21	1.380 (3)
N1—C8	1.409 (2)	C21—C22	1.501 (3)
N1—C9	1.427 (2)	C23—C28	1.371 (3)
N2—C22	1.402 (2)	C23—C24	1.378 (3)
N2—C15	1.407 (3)	C24—C25	1.389 (3)
N2—C23	1.430 (2)	C25—C26	1.366 (3)
C1—C2	1.500 (3)	C26—C27	1.374 (3)
C2—C3	1.376 (3)	C27—C28	1.393 (3)
C2—C7	1.387 (3)	C27—H27	0.9500
C3—C4	1.404 (3)	C28—H28	0.9500
C1—N1—C8	113.57 (17)	C9—C14—C13	120.1 (2)
C1—N1—C9	123.83 (18)	C9—C14—H14	120.0
C8—N1—C9	122.60 (18)	C13—C14—H14	120.0
C22—N2—C15	113.18 (17)	O3—C15—N2	125.24 (19)
C22—N2—C23	123.55 (18)	O3—C15—C16	130.1 (2)
C15—N2—C23	123.13 (18)	N2—C15—C16	104.68 (17)
O1—C1—N1	125.92 (19)	C17—C16—C21	121.68 (19)

supplementary materials

O1—C1—C2	129.4 (2)	C17—C16—C15	129.5 (2)
N1—C1—C2	104.68 (17)	C21—C16—C15	108.75 (18)
C3—C2—C7	121.54 (19)	C16—C17—C18	117.6 (2)
C3—C2—C1	129.7 (2)	C16—C17—C15	121.73 (16)
C7—C2—C1	108.72 (18)	C18—C17—C15	120.65 (16)
C2—C3—C4	117.8 (2)	C19—C18—C17	120.79 (19)
C2—C3—C11	121.46 (17)	C19—C18—C16	119.63 (16)
C4—C3—C11	120.77 (16)	C17—C18—C16	119.54 (17)
C5—C4—C3	120.72 (19)	C18—C19—C20	120.45 (19)
C5—C4—C12	119.49 (16)	C18—C19—C17	119.97 (16)
C3—C4—C12	119.79 (17)	C20—C19—C17	119.56 (17)
C4—C5—C6	120.68 (19)	C21—C20—C19	118.1 (2)
C4—C5—C13	120.40 (16)	C21—C20—C18	120.78 (16)
C6—C5—C13	118.92 (17)	C19—C20—C18	121.09 (16)
C7—C6—C5	117.6 (2)	C20—C21—C16	121.3 (2)
C7—C6—C14	121.10 (17)	C20—C21—C22	130.2 (2)
C5—C6—C14	121.33 (17)	C16—C21—C22	108.44 (18)
C6—C7—C2	121.7 (2)	O4—C22—N2	125.79 (19)
C6—C7—C8	129.7 (2)	O4—C22—C21	129.3 (2)
C2—C7—C8	108.60 (18)	N2—C22—C21	104.91 (18)
O2—C8—N1	125.93 (19)	C28—C23—C24	120.4 (2)
O2—C8—C7	129.7 (2)	C28—C23—N2	121.9 (2)
N1—C8—C7	104.38 (18)	C24—C23—N2	117.7 (2)
C10—C9—C14	120.17 (19)	F4—C24—C23	120.94 (19)
C10—C9—N1	119.27 (19)	F4—C24—C25	119.1 (2)
C14—C9—N1	120.53 (19)	C23—C24—C25	120.0 (2)
F1—C10—C9	120.85 (19)	F5—C25—C26	121.5 (2)
F1—C10—C11	119.0 (2)	F5—C25—C24	119.6 (2)
C9—C10—C11	120.2 (2)	C26—C25—C24	118.9 (2)
F2—C11—C12	120.8 (2)	F6—C26—C25	118.4 (2)
F2—C11—C10	120.3 (2)	F6—C26—C27	119.6 (2)
C12—C11—C10	118.9 (2)	C25—C26—C27	122.0 (2)
F3—C12—C13	120.3 (2)	C26—C27—C28	118.6 (2)
F3—C12—C11	117.7 (2)	C26—C27—H27	120.7
C13—C12—C11	122.0 (2)	C28—C27—H27	120.7
C12—C13—C14	118.6 (2)	C23—C28—C27	120.0 (2)
C12—C13—H13	120.7	C23—C28—H28	120.0
C14—C13—H13	120.7	C27—C28—H28	120.0
C8—N1—C1—O1	-179.0 (2)	C22—N2—C15—O3	-178.8 (2)
C9—N1—C1—O1	1.9 (4)	C23—N2—C15—O3	-3.1 (4)
C8—N1—C1—C2	0.2 (2)	C22—N2—C15—C16	-0.4 (2)
C9—N1—C1—C2	-178.89 (19)	C23—N2—C15—C16	175.38 (19)
O1—C1—C2—C3	-2.9 (4)	O3—C15—C16—C17	-0.1 (4)
N1—C1—C2—C3	177.9 (2)	N2—C15—C16—C17	-178.4 (2)
O1—C1—C2—C7	177.5 (2)	O3—C15—C16—C21	177.4 (2)
N1—C1—C2—C7	-1.7 (2)	N2—C15—C16—C21	-0.9 (2)
C7—C2—C3—C4	-1.4 (3)	C21—C16—C17—C18	-2.9 (3)
C1—C2—C3—C4	179.1 (2)	C15—C16—C17—C18	174.3 (2)
C7—C2—C3—C11	179.12 (16)	C21—C16—C17—C15	178.95 (16)

C1—C2—C3—C11	-0.4 (3)	C15—C16—C17—C15	-3.8 (3)
C2—C3—C4—C5	0.1 (3)	C16—C17—C18—C19	1.3 (3)
C11—C3—C4—C5	179.60 (16)	C15—C17—C18—C19	179.47 (16)
C2—C3—C4—C12	-179.57 (16)	C16—C17—C18—C16	-176.17 (16)
C11—C3—C4—C12	-0.1 (3)	C15—C17—C18—C16	2.0 (3)
C3—C4—C5—C6	1.2 (3)	C17—C18—C19—C20	1.2 (3)
C12—C4—C5—C6	-179.15 (16)	C16—C18—C19—C20	178.69 (16)
C3—C4—C5—C13	-178.42 (16)	C17—C18—C19—C17	-177.29 (16)
C12—C4—C5—C13	1.3 (3)	C16—C18—C19—C17	0.2 (3)
C4—C5—C6—C7	-1.1 (3)	C18—C19—C20—C21	-2.1 (3)
C13—C5—C6—C7	178.44 (15)	C17—C19—C20—C21	176.36 (16)
C4—C5—C6—C14	178.15 (16)	C18—C19—C20—C18	179.31 (16)
C13—C5—C6—C14	-2.3 (3)	C17—C19—C20—C18	-2.2 (3)
C5—C6—C7—C2	-0.1 (3)	C19—C20—C21—C16	0.6 (3)
C14—C6—C7—C2	-179.42 (16)	C18—C20—C21—C16	179.13 (16)
C5—C6—C7—C8	178.2 (2)	C19—C20—C21—C22	-176.3 (2)
C14—C6—C7—C8	-1.1 (3)	C18—C20—C21—C22	2.2 (3)
C3—C2—C7—C6	1.4 (3)	C17—C16—C21—C20	2.0 (3)
C1—C2—C7—C6	-178.94 (19)	C15—C16—C21—C20	-175.73 (19)
C3—C2—C7—C8	-177.2 (2)	C17—C16—C21—C22	179.53 (19)
C1—C2—C7—C8	2.4 (2)	C15—C16—C21—C22	1.8 (2)
C1—N1—C8—O2	-178.4 (2)	C15—N2—C22—O4	-179.2 (2)
C9—N1—C8—O2	0.8 (4)	C23—N2—C22—O4	5.1 (4)
C1—N1—C8—C7	1.1 (2)	C15—N2—C22—C21	1.4 (2)
C9—N1—C8—C7	-179.71 (18)	C23—N2—C22—C21	-174.33 (19)
C6—C7—C8—O2	-1.2 (4)	C20—C21—C22—O4	-4.1 (4)
C2—C7—C8—O2	177.3 (2)	C16—C21—C22—O4	178.7 (2)
C6—C7—C8—N1	179.3 (2)	C20—C21—C22—N2	175.3 (2)
C2—C7—C8—N1	-2.2 (2)	C16—C21—C22—N2	-2.0 (2)
C1—N1—C9—C10	66.6 (3)	C22—N2—C23—C28	-72.5 (3)
C8—N1—C9—C10	-112.4 (2)	C15—N2—C23—C28	112.2 (3)
C1—N1—C9—C14	-115.1 (2)	C22—N2—C23—C24	107.1 (2)
C8—N1—C9—C14	65.9 (3)	C15—N2—C23—C24	-68.2 (3)
C14—C9—C10—F1	178.6 (2)	C28—C23—C24—F4	-179.3 (2)
N1—C9—C10—F1	-3.1 (3)	N2—C23—C24—F4	1.1 (3)
C14—C9—C10—C11	-2.1 (4)	C28—C23—C24—C25	0.2 (3)
N1—C9—C10—C11	176.2 (2)	N2—C23—C24—C25	-179.4 (2)
F1—C10—C11—F2	-0.2 (4)	F4—C24—C25—F5	-1.6 (3)
C9—C10—C11—F2	-179.5 (2)	C23—C24—C25—F5	178.8 (2)
F1—C10—C11—C12	-179.9 (2)	F4—C24—C25—C26	179.4 (2)
C9—C10—C11—C12	0.8 (4)	C23—C24—C25—C26	-0.1 (4)
F2—C11—C12—F3	0.4 (4)	F5—C25—C26—F6	1.8 (4)
C10—C11—C12—F3	-179.8 (2)	C24—C25—C26—F6	-179.3 (2)
F2—C11—C12—C13	-179.0 (2)	F5—C25—C26—C27	-178.8 (2)
C10—C11—C12—C13	0.7 (4)	C24—C25—C26—C27	0.1 (4)
F3—C12—C13—C14	179.7 (2)	F6—C26—C27—C28	179.2 (2)
C11—C12—C13—C14	-0.9 (4)	C25—C26—C27—C28	-0.2 (4)
C10—C9—C14—C13	2.0 (4)	C24—C23—C28—C27	-0.3 (3)
N1—C9—C14—C13	-176.3 (2)	N2—C23—C28—C27	179.3 (2)

supplementary materials

C12—C13—C14—C9

−0.5 (4)

C26—C27—C28—C23

0.3 (4)

Hydrogen-bond geometry (Å, °)

D—H···*A*

D—H

H···*A*

D···*A*

D—H···*A*

C14—H14···O3ⁱ

0.95

2.44

3.210 (3)

138

C27—H27···F3ⁱⁱ

0.95

2.45

3.379 (3)

165

C28—H28···O1

0.95

2.50

3.403 (3)

158

Symmetry codes: (i) $x, y-1, z$; (ii) $-x+1, -y+1, -z+1$.

Fig. 1

